

# **PERGOLA SOLID**

**PERGOLA SOLID** is an aesthetic, aluminium construction with a movable roof. The system of trolleys that moves thanks to the built-in electric drive provides comfortable operation of the roofing system. Hidden water drainage system in the construction makes SOLID a product that is characterised by its high functionality and aesthetic quality. LED lighting option available.

**USAGE:**

- Sun protection and surface shading. It is also rainproof.

**PRODUCT CHARACTERISTICS:**

- Extruded aluminium construction with stainless steel elements
- Water drainage system integrated with the construction
- Movable roofing operated electrically
- Possibility of using weather automation
- Waterproof movable roof and aesthetic water drainage through the gutter behind the eaves beam and front posts
- LED lighting option available (from below the beams of movable module)
- Protects from the influence of weather conditions: rain and wind
- It is not snowproof
- It does not emit toxic substances during the operational term
- The noise pollution due to the electro-mechanical drive is not considered to be a significant threat, but is rather a comfort matter
- Easy access to the motor
- Wall mounted and free-standing version available
- Modular connection option available
- Construction in accordance with PN-EN 1090 and PN-EN 13561

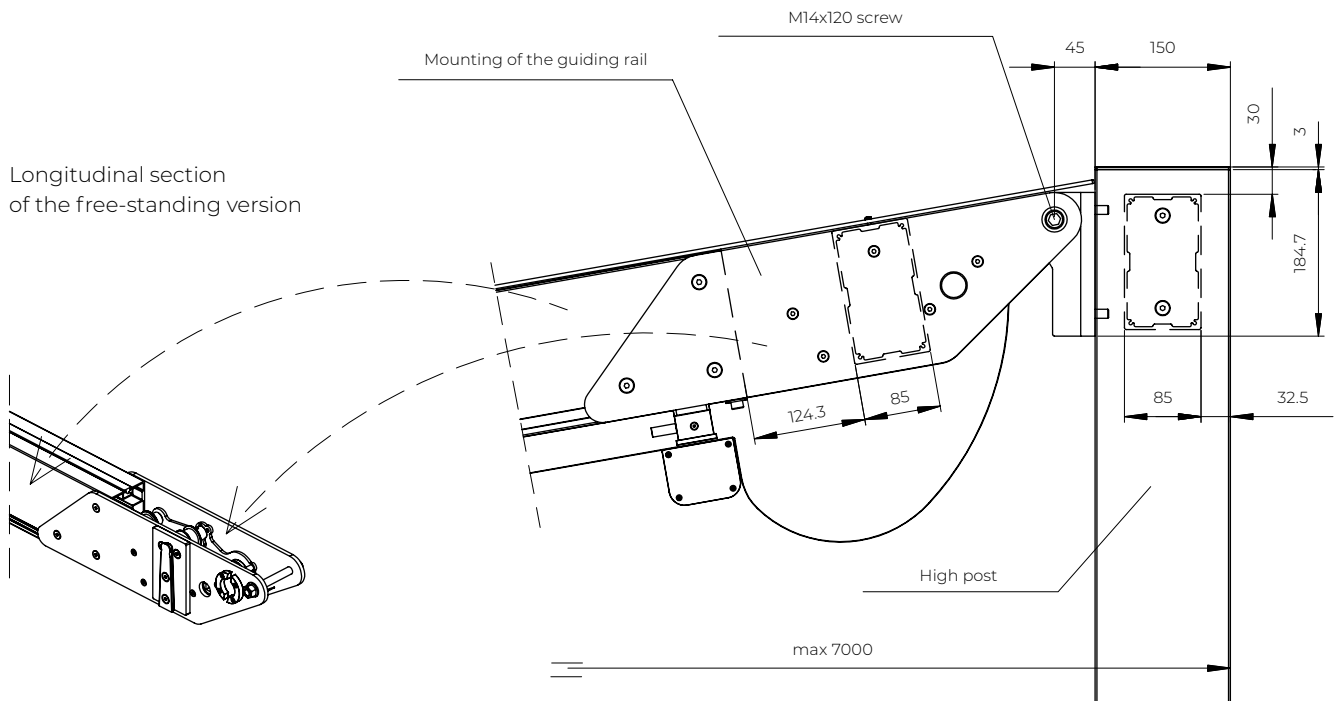
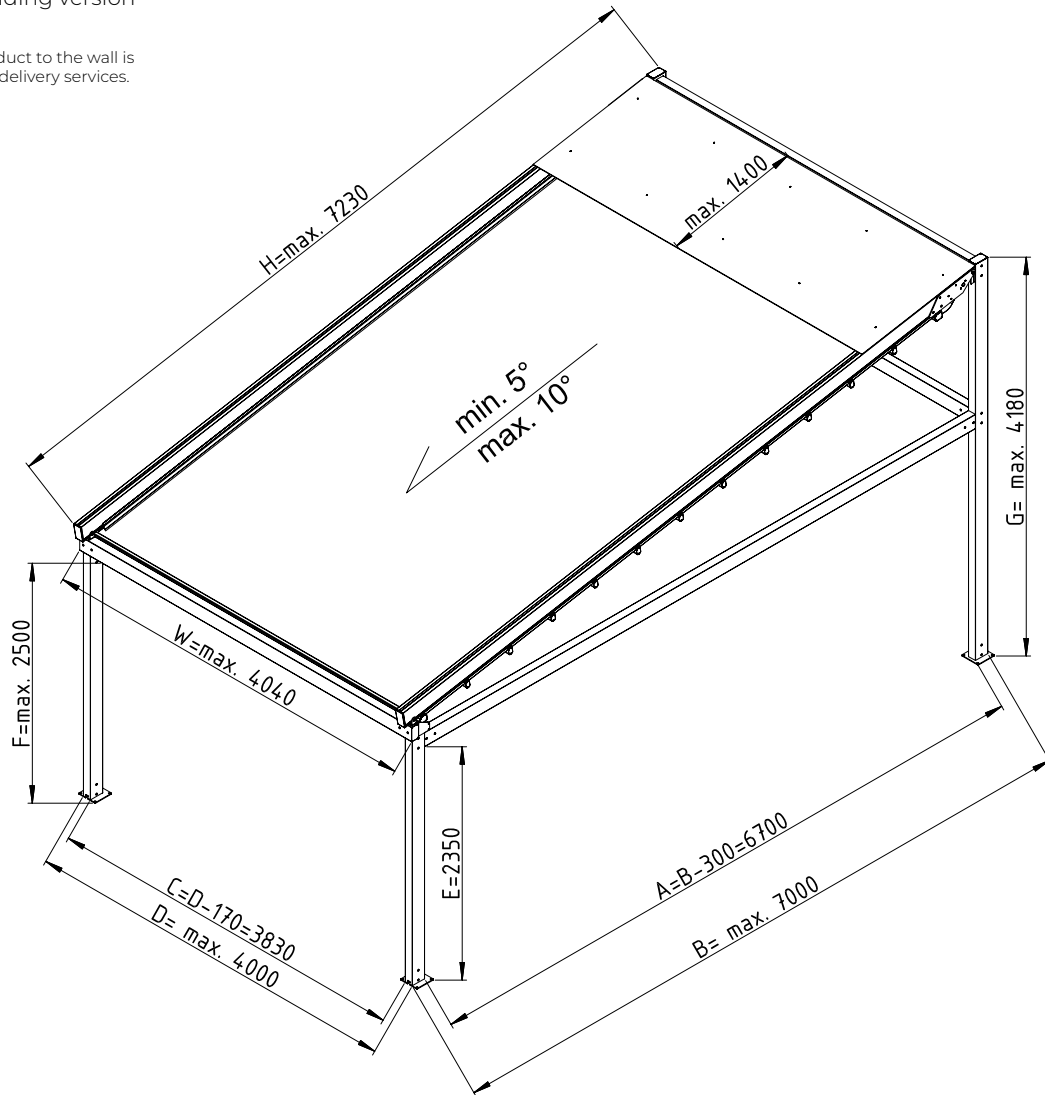
**TECHNICAL SPECIFICATIONS:**

- Maximum width of the module 4 m
- Maximum projection 7 m
- Maximum height in the light of front beam 2.5 m
- Slope angle 5-10 degrees (maximum tilt angle depends on established projection)
- Electric drive - Geiger CJ5620 motor
- Construction colours - 9016M, FSM71319, 7016M (standard) and RAL palette (optional)
- External usage
- Cover - PVC fabric dedicated for the Solid system

PERMISSABLE TECHNOLOGICAL TOLERANCES OF THE EXTERNAL DIMENSIONS OF PERGOLAS ARE +/- 10 mm.

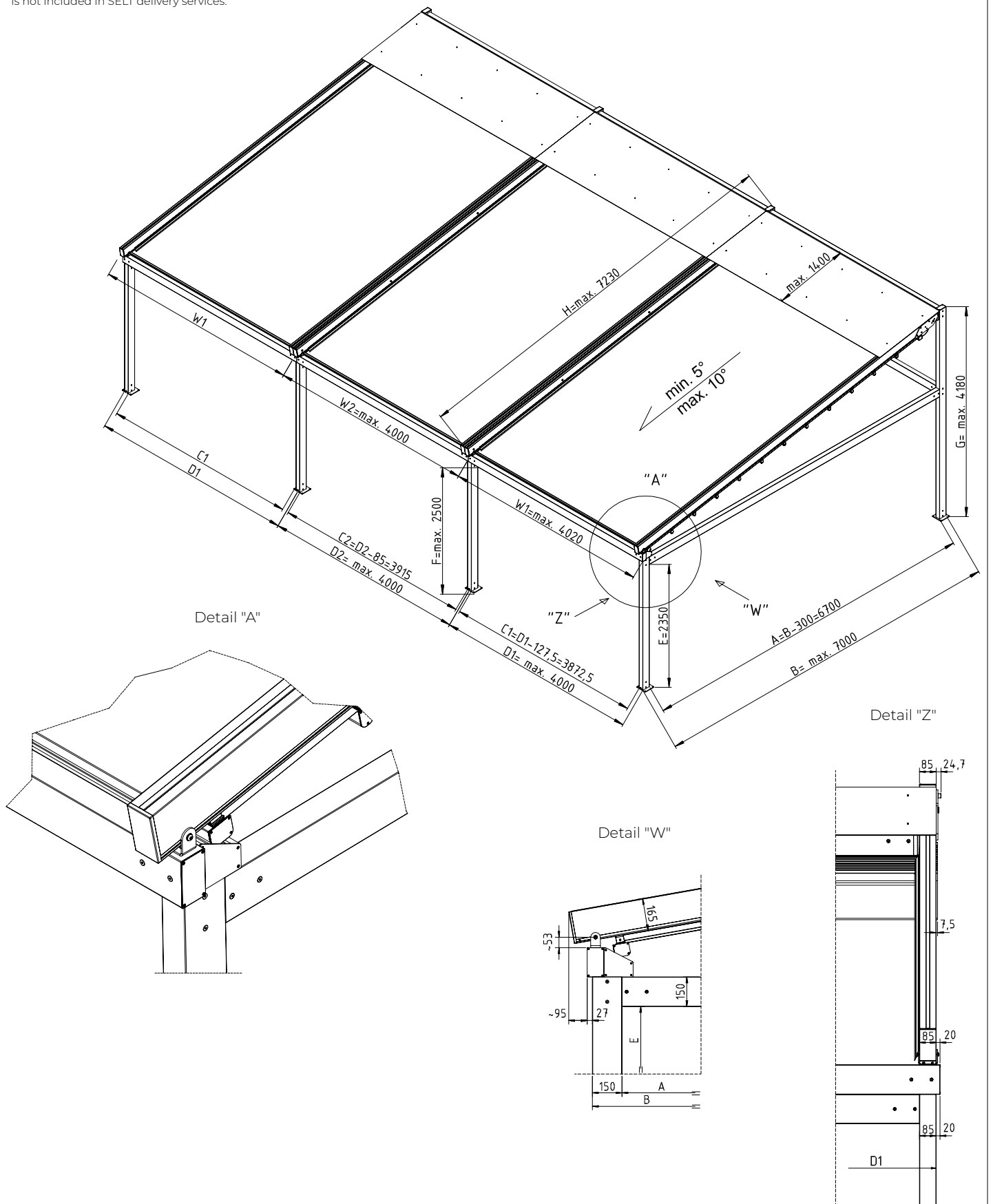
**PERGOLA SOLID**  
Single free-standing version

NOTE:  
Plate sealing the product to the wall is not included in SELT delivery services.



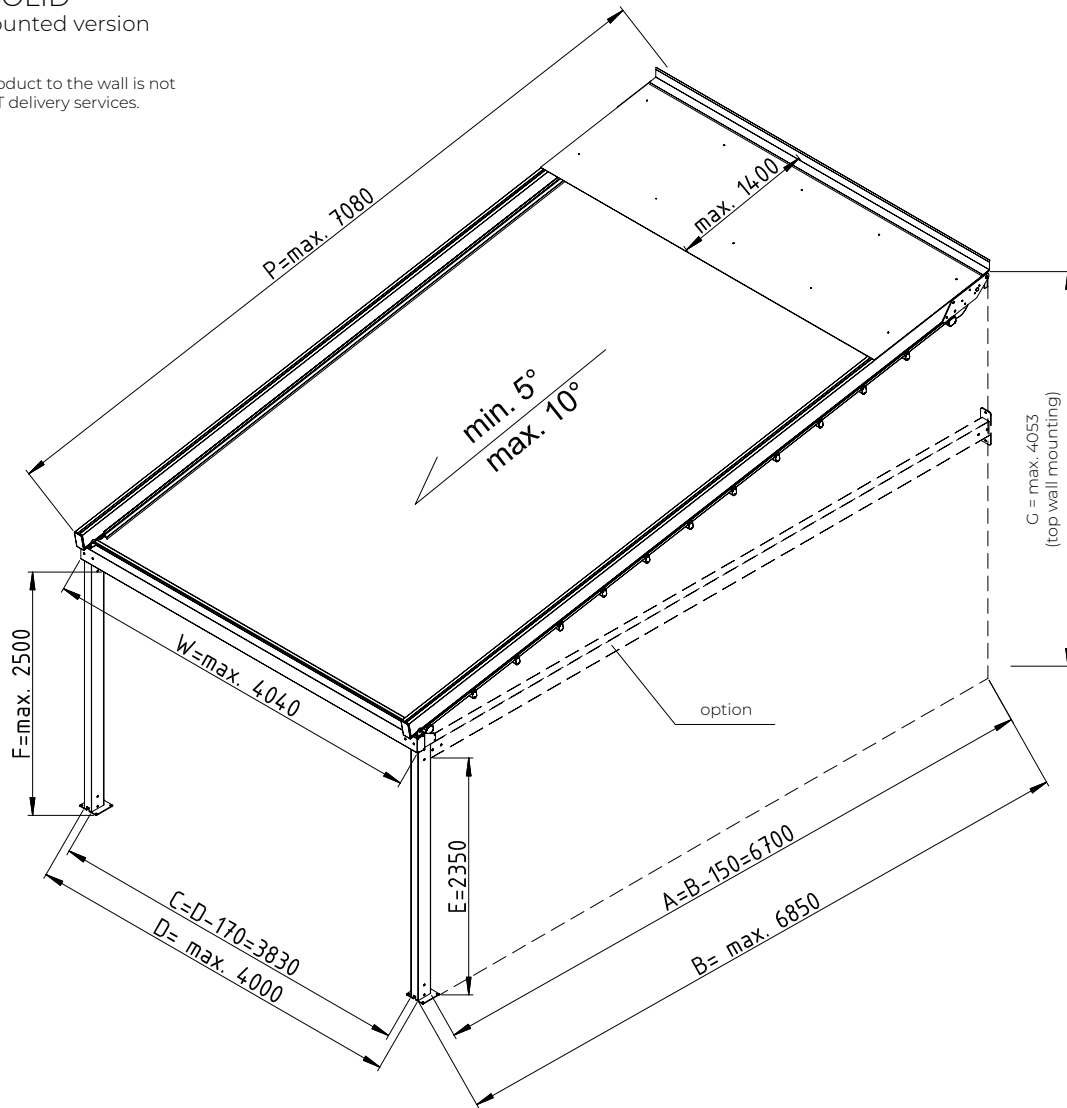
**PERGOLA SOLID**  
Modular free-standing version

NOTE:  
Plate sealing product to the wall  
is not included in SELT delivery services.

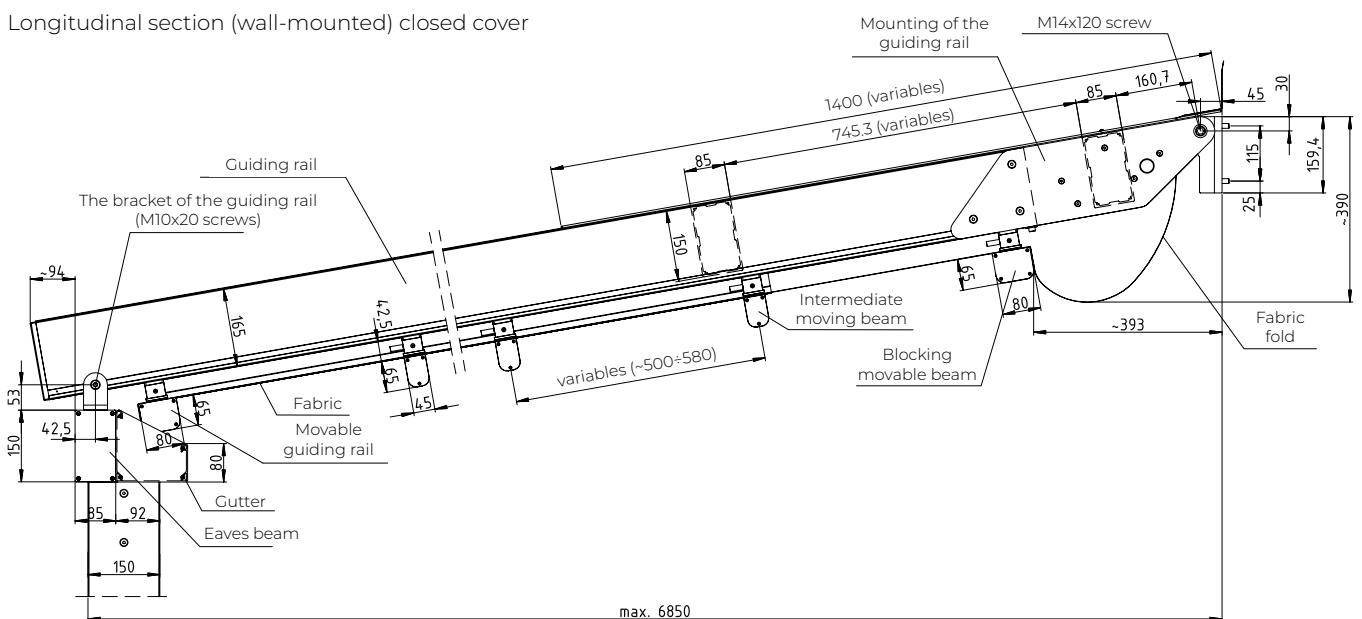


**PERGOLA SOLID**  
Single wall-mounted version

NOTE:  
Plate sealing the product to the wall is not included in the SELT delivery services.

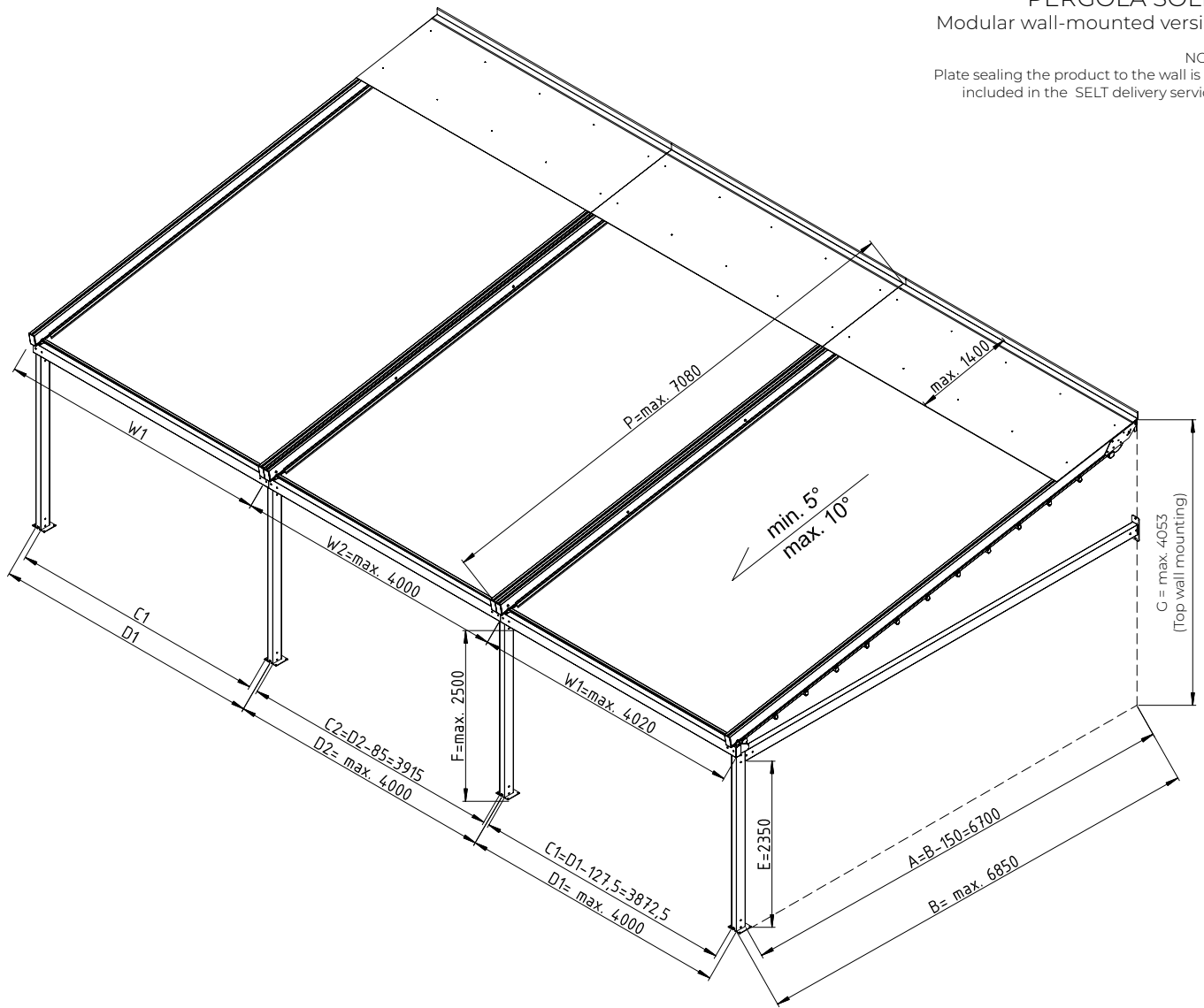


Longitudinal section (wall-mounted) closed cover

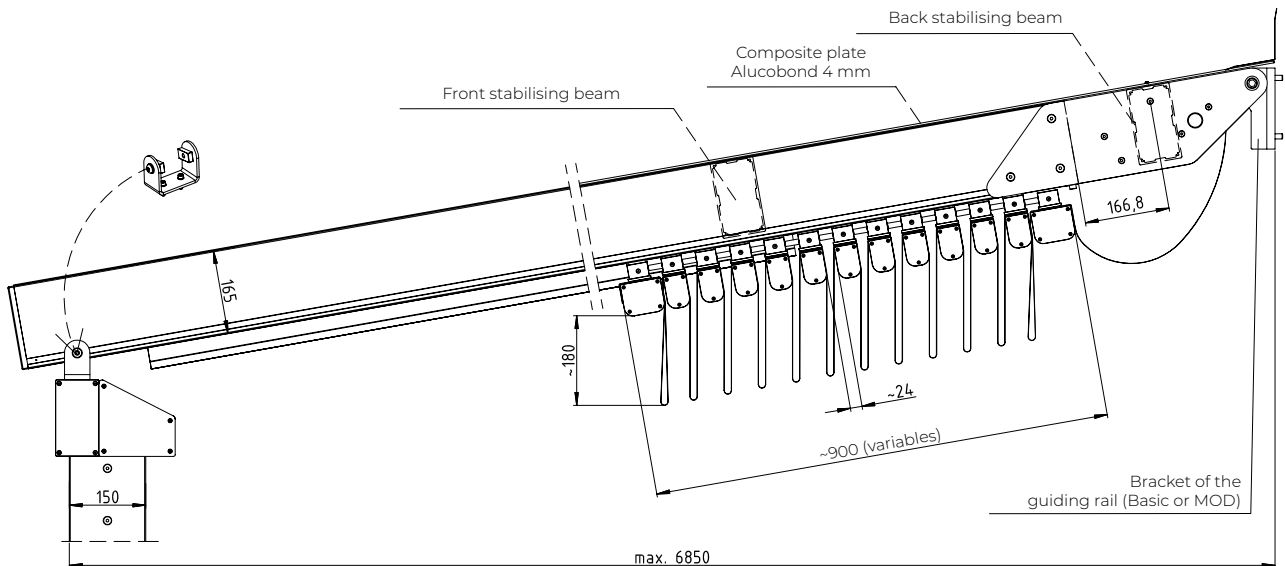


**PERGOLA SOLID**  
Modular wall-mounted version

NOTE:  
Plate sealing the product to the wall is not included in the SELT delivery services.

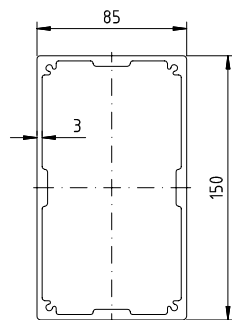


Longitudinal section (wall-mounted) opened cover



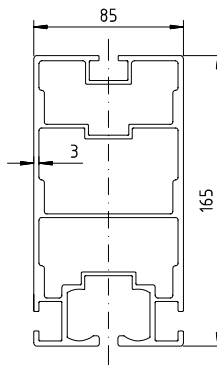
PERGOLA SOLID  
Cross-sections of profiles and gutter

Cross-section  
of the post/beam  
(85x150)



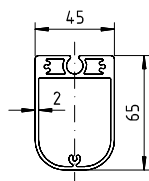
Material: EN AW6060 T66  
Characteristics:  
Mass 4.83 kg/m  
Area 17.89 cm<sup>2</sup>  
J1 215.9 cm<sup>4</sup>  
J2 564.44 cm<sup>4</sup>

Cross-section  
of the guide beam  
(85x165)



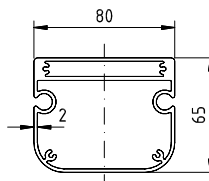
Material: EN AW6060 T66  
Characteristics:  
Mass 6.96 kg/m  
Area 25.77 cm<sup>2</sup>  
J1 267.79 cm<sup>4</sup>  
J2 746.66 cm<sup>4</sup>

Roof beam cross-section  
(45x65)



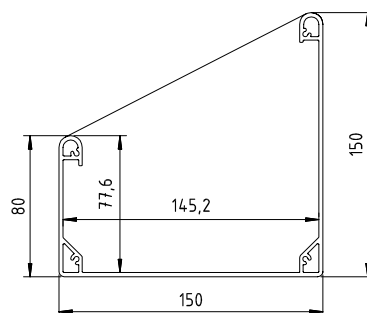
Material: EN AW6060 T66  
Characteristics:  
Mass 1.73 kg/m  
Area 6.41 cm<sup>2</sup>  
J1 16.87 cm<sup>4</sup>  
J2 31.54 cm<sup>4</sup>

Front roof beam cross-section  
(80x65)



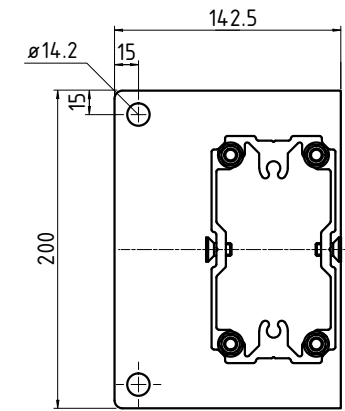
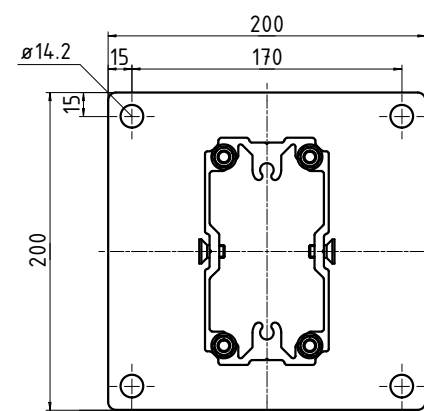
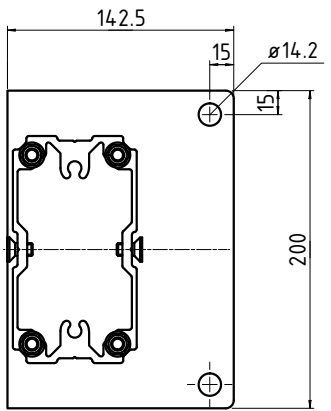
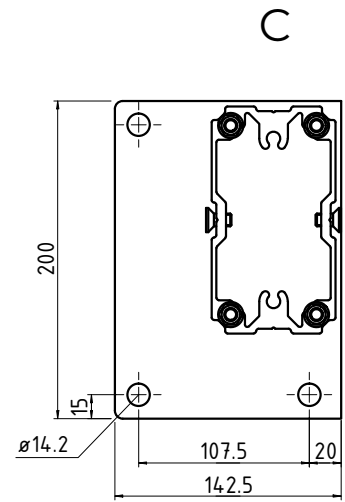
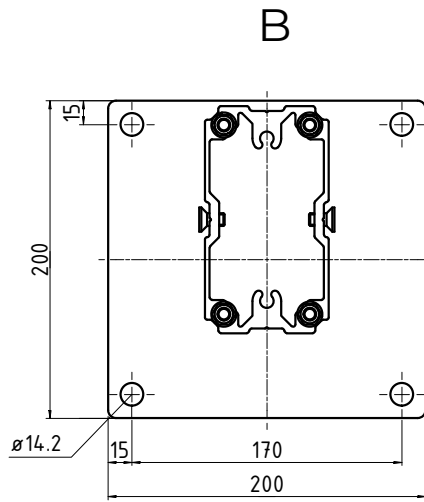
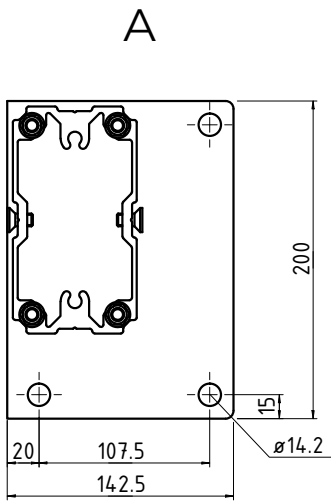
Material: EN AW6060 T66  
Characteristics:  
Mass 2.54 kg/m  
Area 9.40 cm<sup>2</sup>  
J1 81.37 cm<sup>4</sup>  
J2 48.93 cm<sup>4</sup>

Cross-section of the gutter  
(150x150)

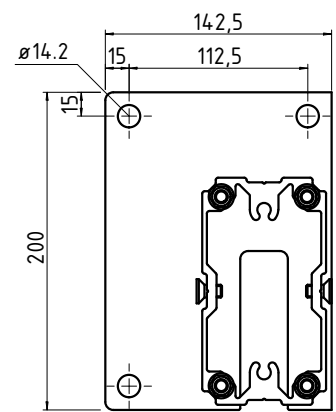
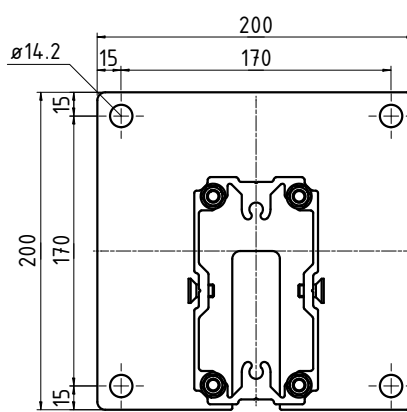
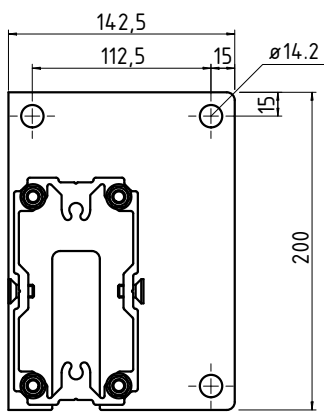


Material: EN AW6060 T66  
Mass 3.1 kg/m

PERGOLA SOLID  
Feet without the water outflow



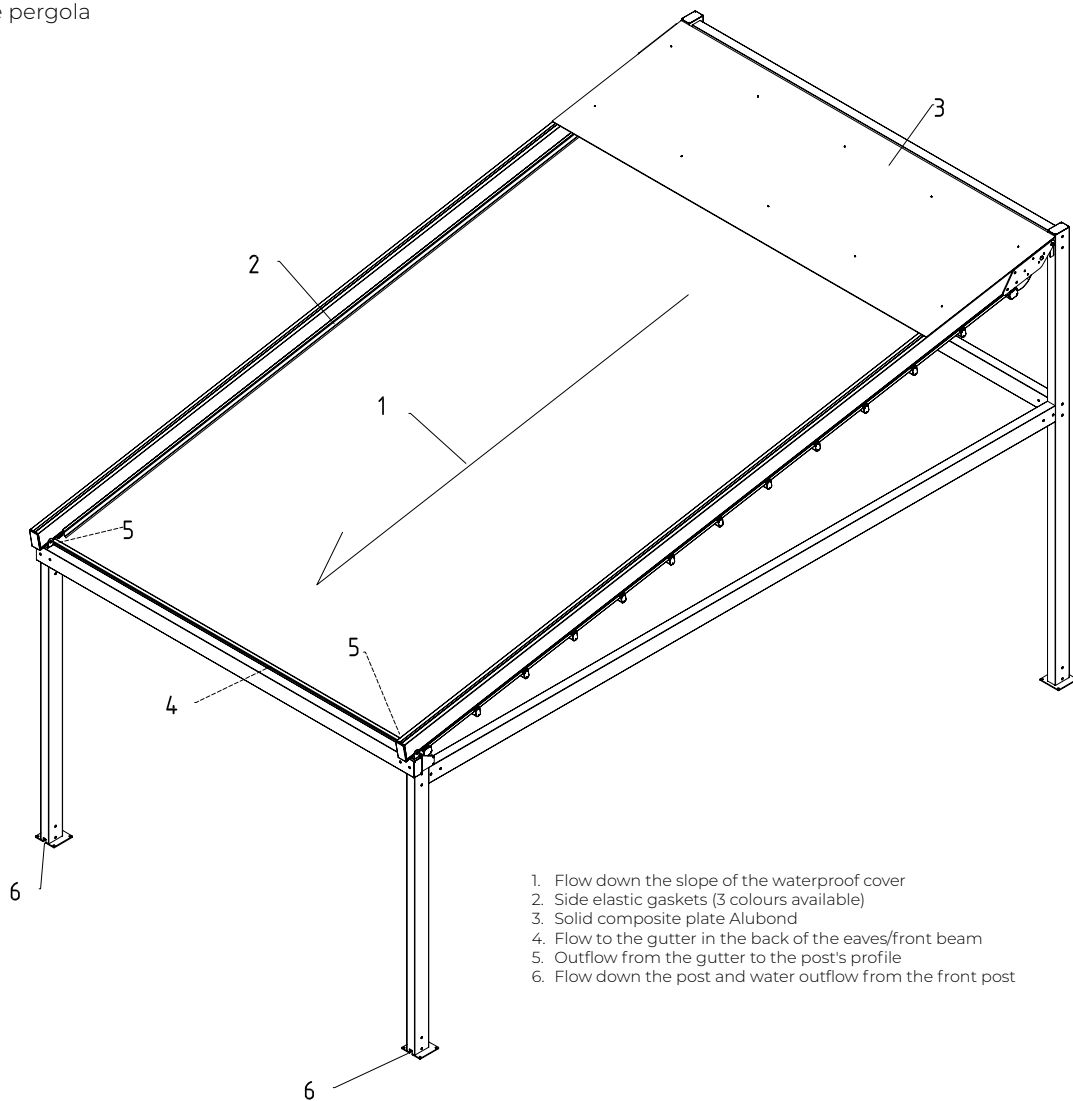
PERGOLA SOLID  
Feet with the water outflow



Feet from the 8 mm thick aluminium sheet EN AW-5754, powder coated



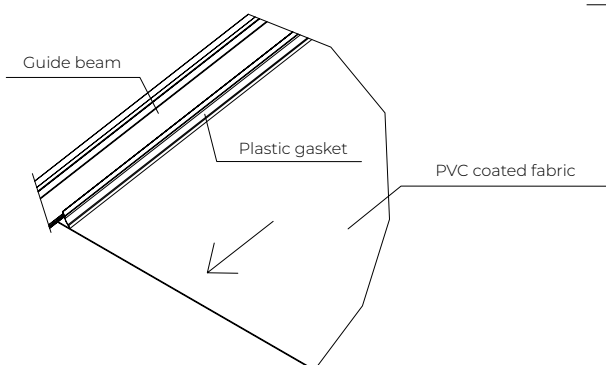
PERGOLA SOLID  
Drainage of the pergola



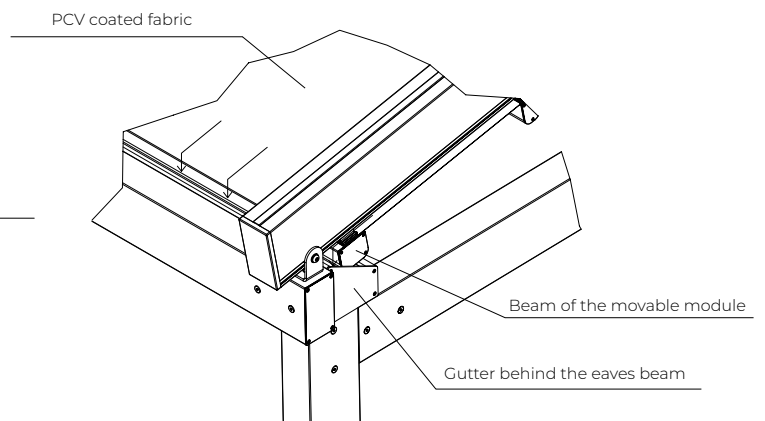
1. Flow down the slope of the waterproof cover
2. Side elastic gaskets (3 colours available)
3. Solid composite plate Alubond
4. Flow to the gutter in the back of the eaves/front beam
5. Outflow from the gutter to the post's profile
6. Flow down the post and water outflow from the front post

Two front posts with water outflow required

Detail no. 2



Detail no. 4

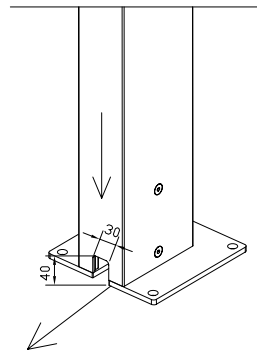
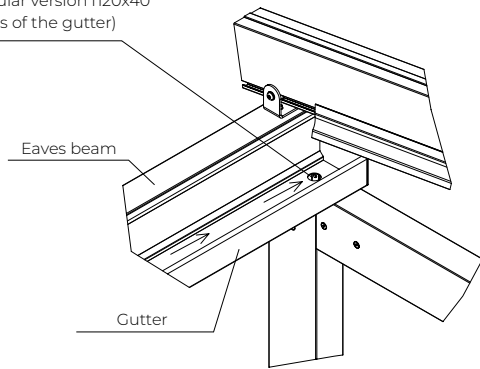


PERGOLA SOLID  
Drainage of the pergola

Detail no. 5

Detail no. 6

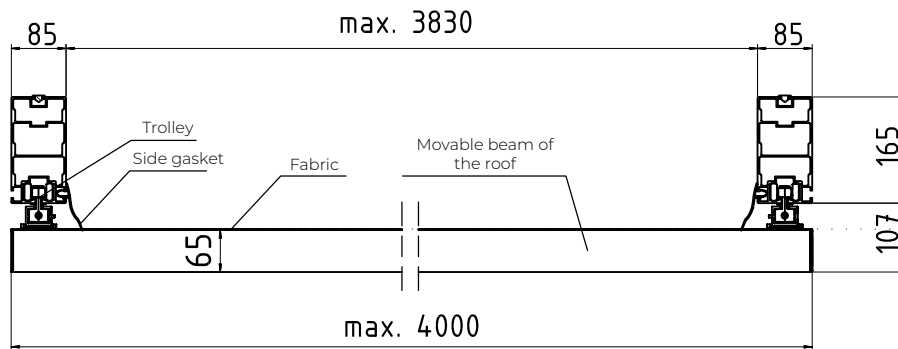
Outflow to the post  $\varnothing 30$   
or in the modular version  $\varnothing 20 \times 40$   
(both ends of the gutter)



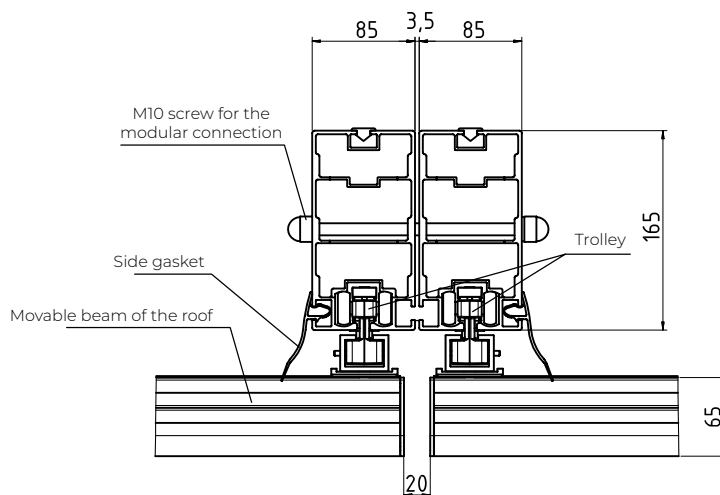
Flow down the profile of the post and water  
outflow through the hole in the wall of the post  
and foot undercut

PERGOLA SOLID  
Cross-sections of the roof

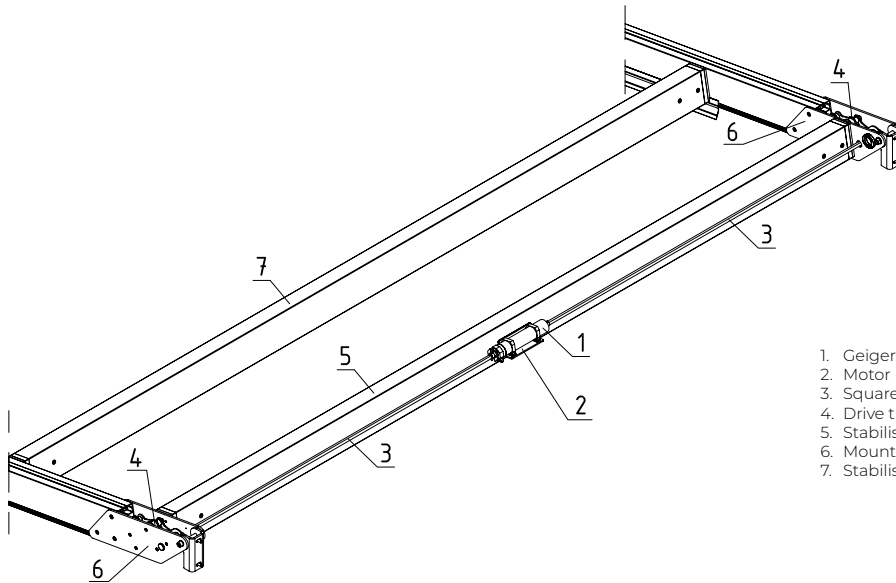
Cross-section of the roof (single version)



Cross-section of the roof  
(modular version)



**PERGOLA SOLID**  
Drive unit of the cover



- 1. Geiger GJ56 motor (2x 10Nm)
- 2. Motor mounting
- 3. Square rod 12 (left/right)
- 4. Drive transmission
- 5. Stabilising beam (back)
- 6. Mounting of the guiding rail
- 7. Stabilising beam (front)

**PERGOLA SOLID**  
Approximate heights of Pergola Solid

Free-standing pergola SOLID						
Projection of pergola	4000 mm		5000 mm		7000 mm	
Slope angle of the roof	5 degrees	10 degrees	5 degrees	10 degrees	5 degrees	10 degrees
Height in the light in the front	2500 mm					
Total height at the top*	3188 mm	3528 mm	3275 mm	3704 mm	3450 mm	4057 mm

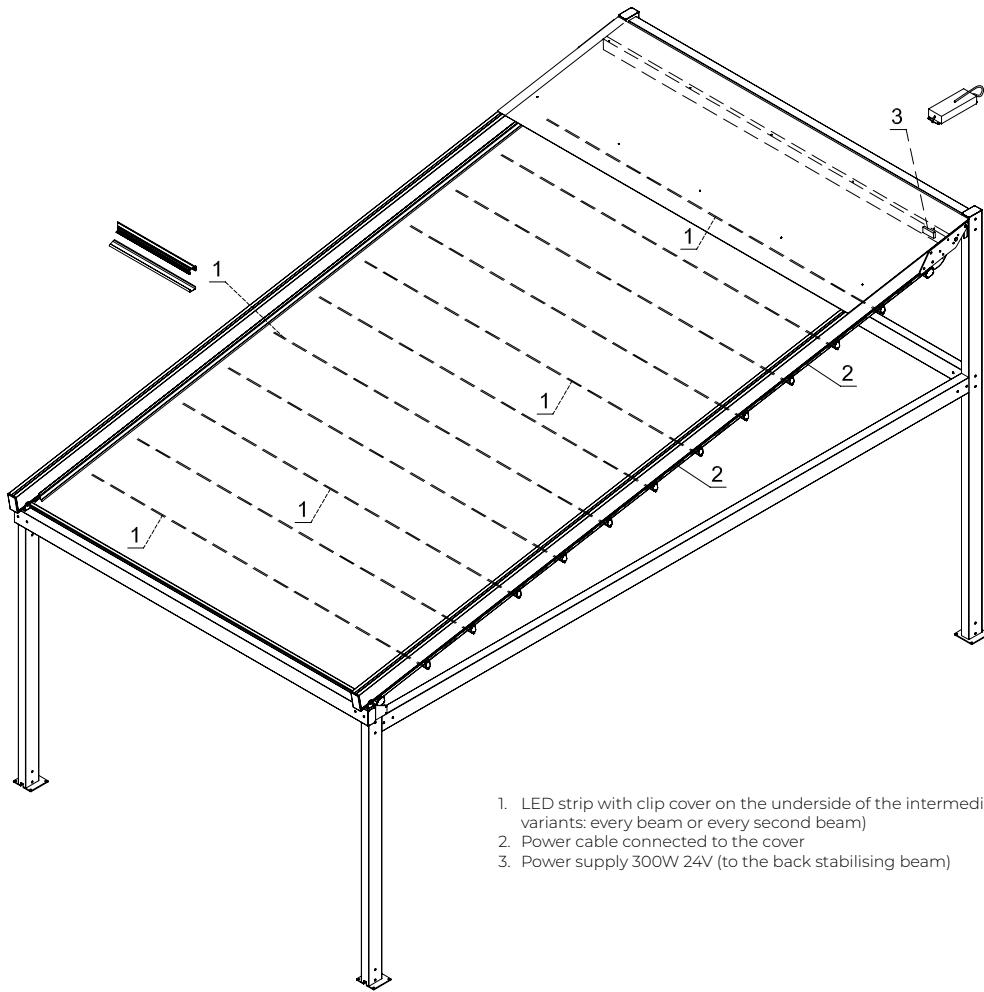
\*approximate dimensions- production technology decides

Wall-mounted pergola SOLID						
Projection of pergola	4000 mm		5000 mm		7000 mm	
Slope angle of the roof	5 degrees	10 degrees	5 degrees	10 degrees	5 degrees	10 degrees
Height in the light in the front	2500 mm					
Total height at the top*	3203 mm	3559 mm	3209 mm	3735 mm	3465 mm	4088 mm

\*approximate dimensions- production technology decides

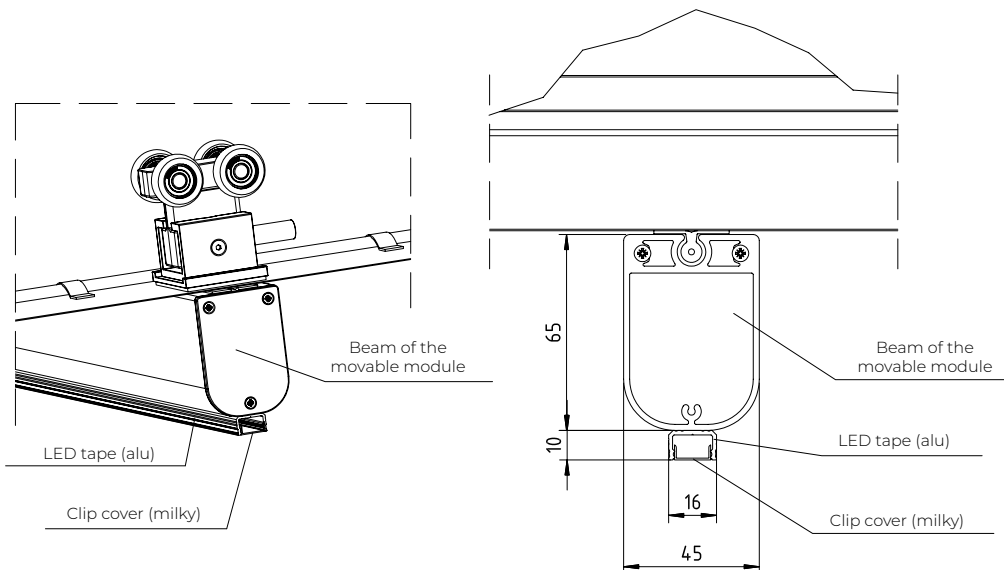
PERGOLA SOLID  
LED lighting of the pergola

SOLID - location of LED strips	
every beam	every second beam
Each narrow movable beam 45x65	First narrow beam 45x65 from the gutter and then every second beam



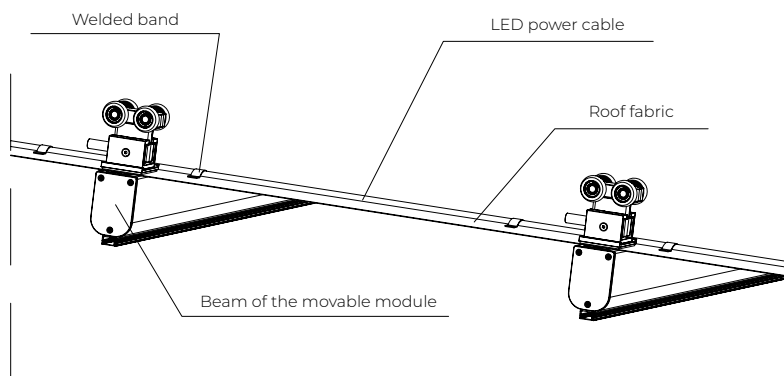
1. LED strip with clip cover on the underside of the intermediate beams (two variants: every beam or every second beam)
2. Power cable connected to the cover
3. Power supply 300W 24V (to the back stabilising beam)

Detail no.1

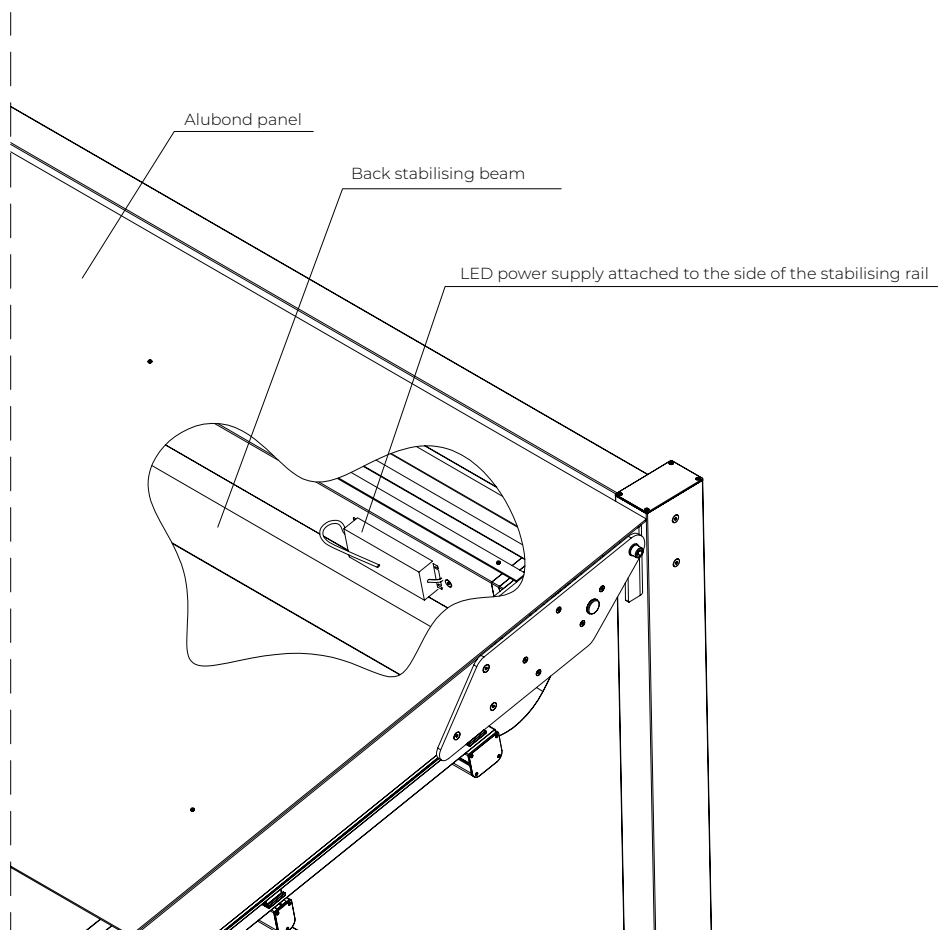


PERGOLA SOLID

Detail no. 2

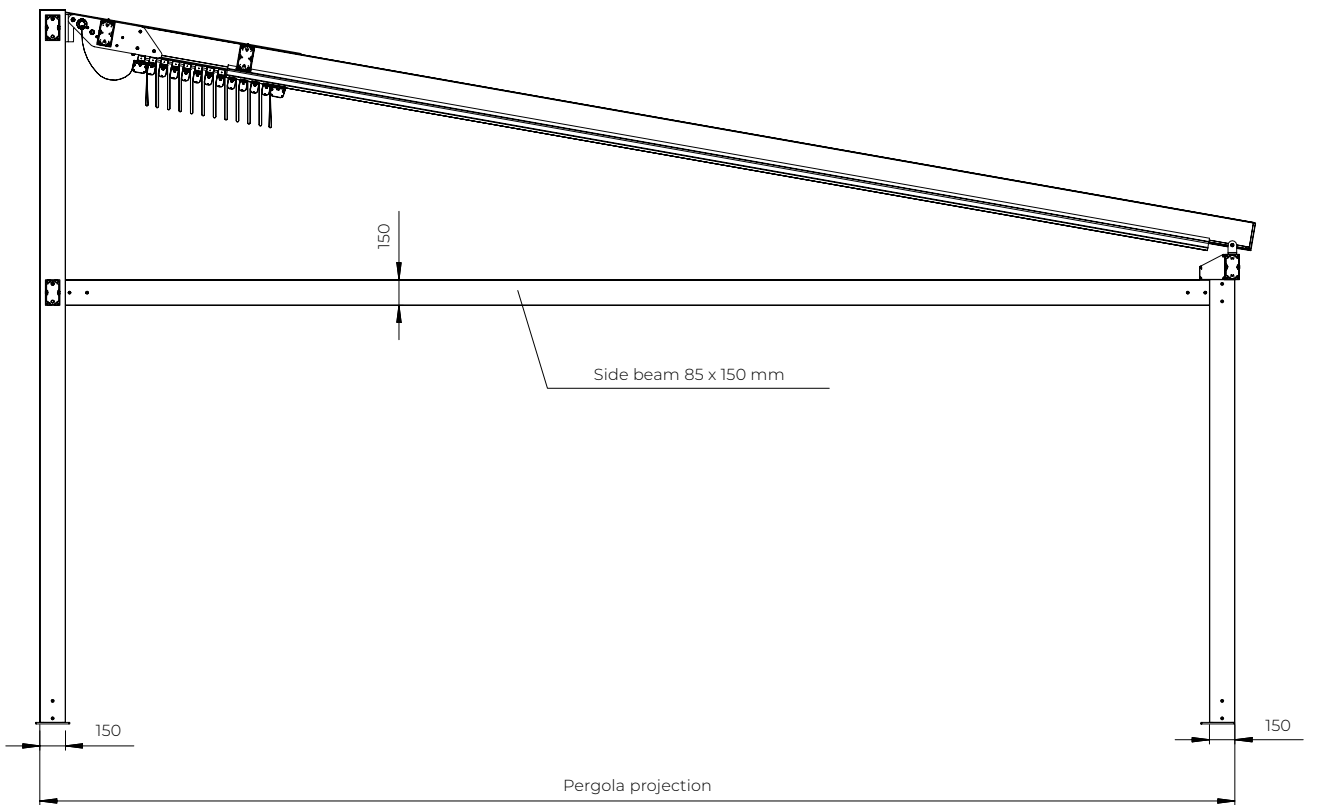
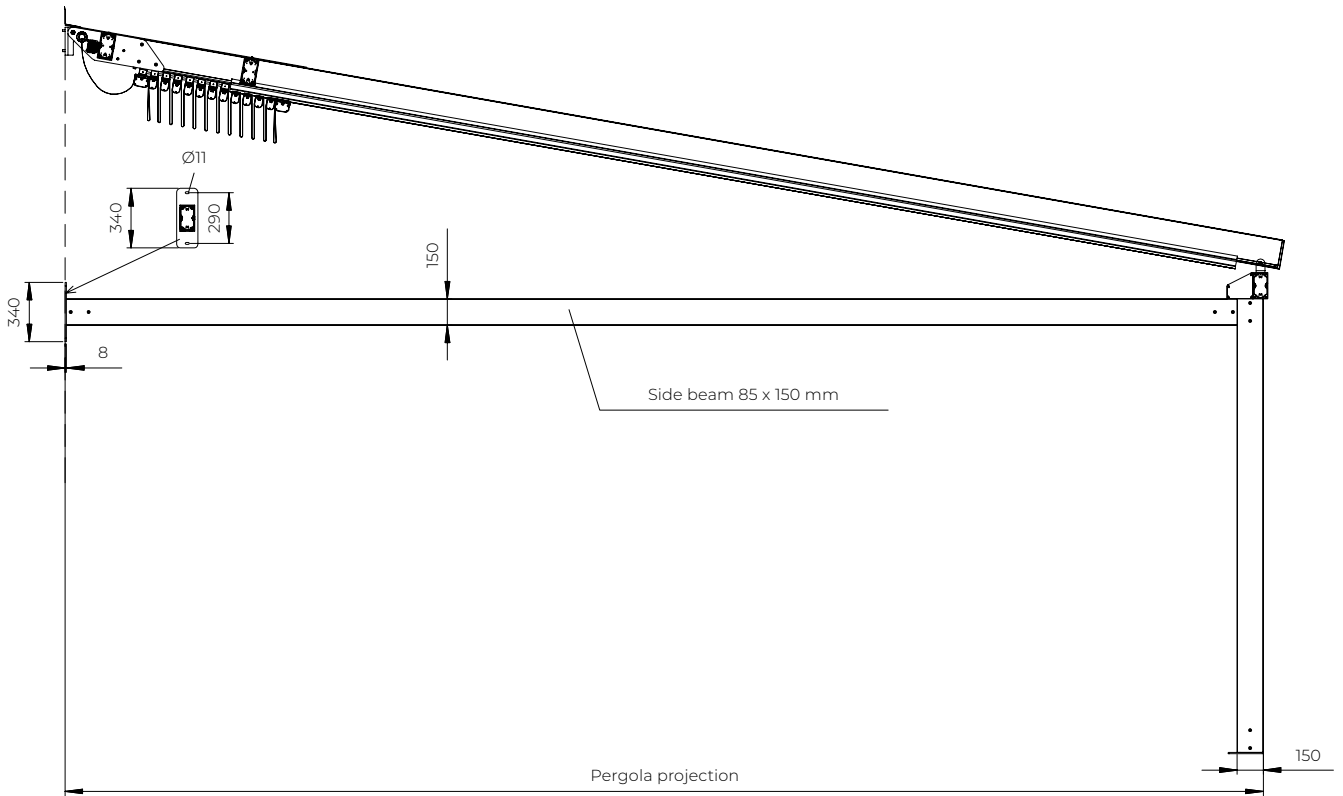


Detail no. 3



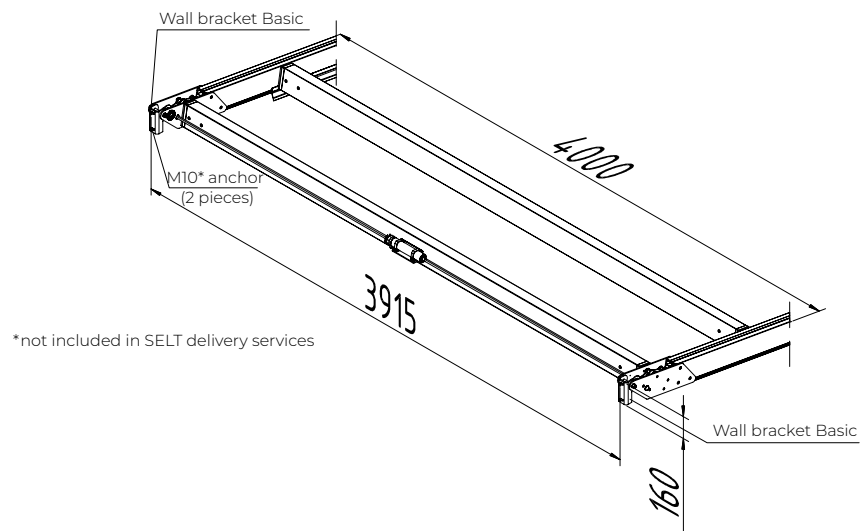
# PERGOLA SOLID

Wall-mounted

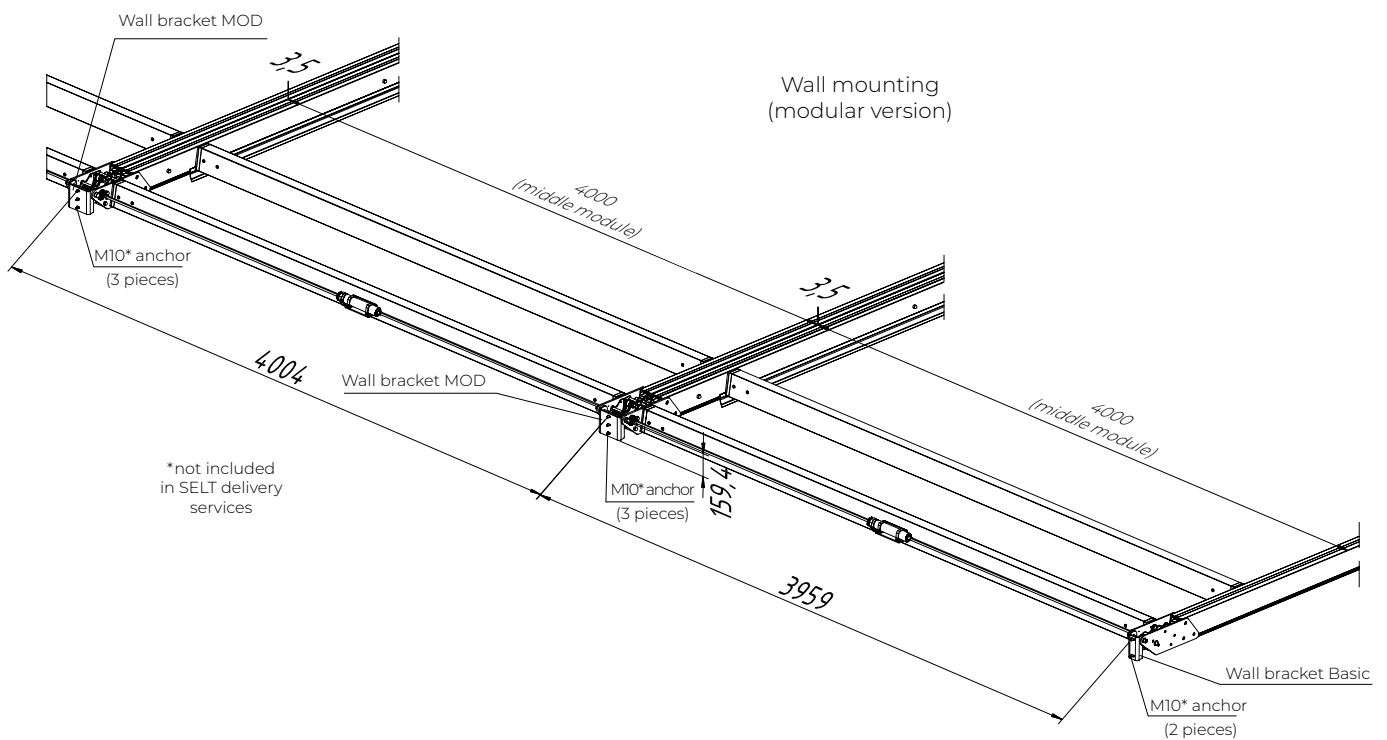


PERGOLA SOLID  
Wall mounting

Wall mounting  
Single version

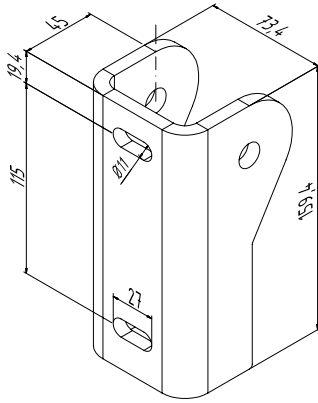


Wall mounting  
(modular version)



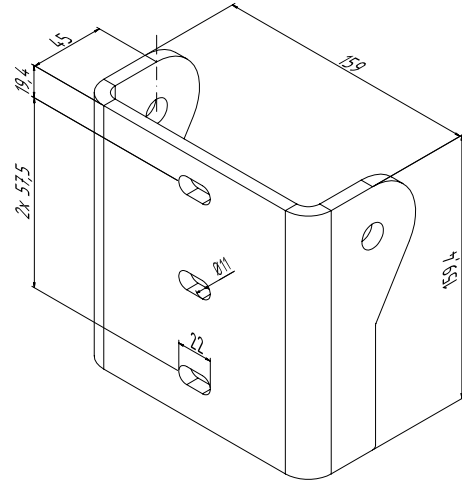
PERGOLA SOLID  
Wall mounting

Wall bracket Basic (single)



Steel S235 gr. 8 mm

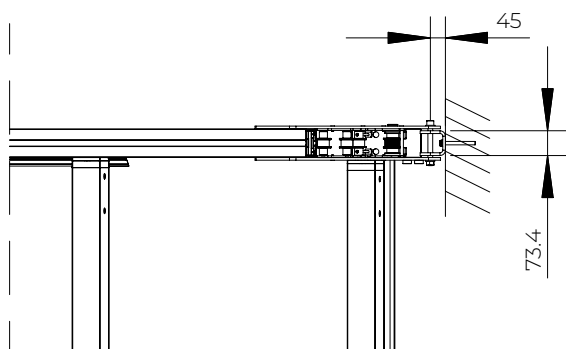
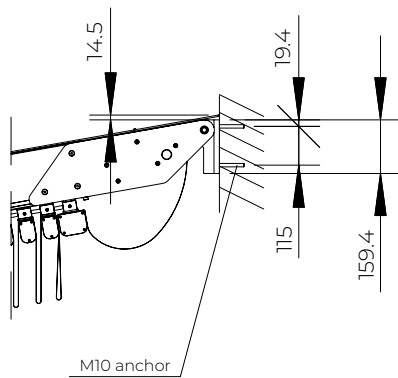
Wall bracket MOD  
(modular)



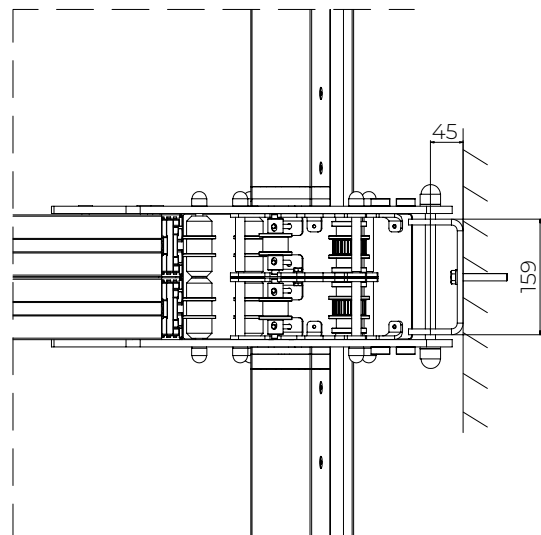
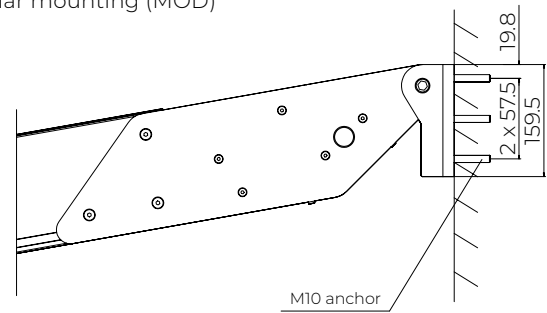
Steel S235 gr. 8 mm

Selection of the number of anchors depends on the surface type.  
It is required to install minimum two anchors in extreme holes.

PERGOLA SOLID  
Wall mounting (Basic)

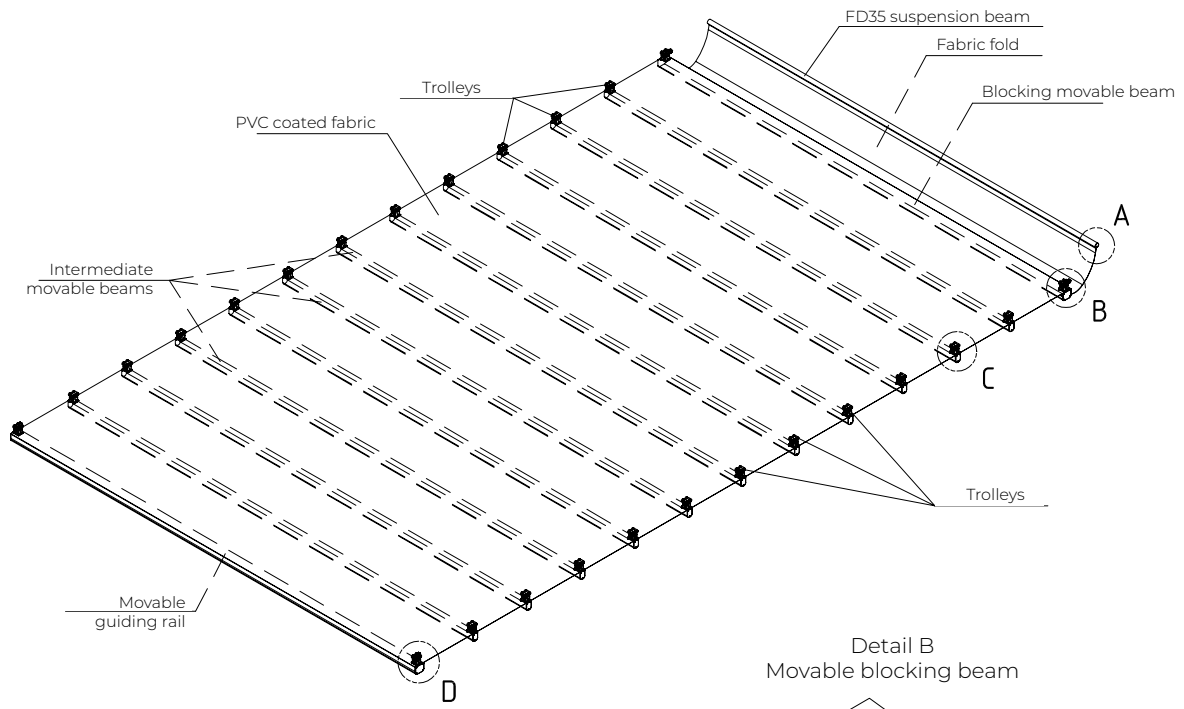


PERGOLA SOLID  
Modular mounting (MOD)

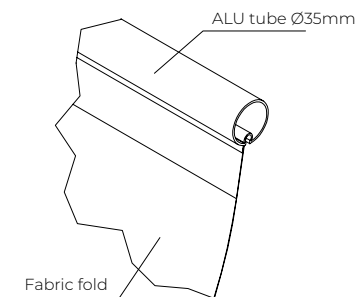




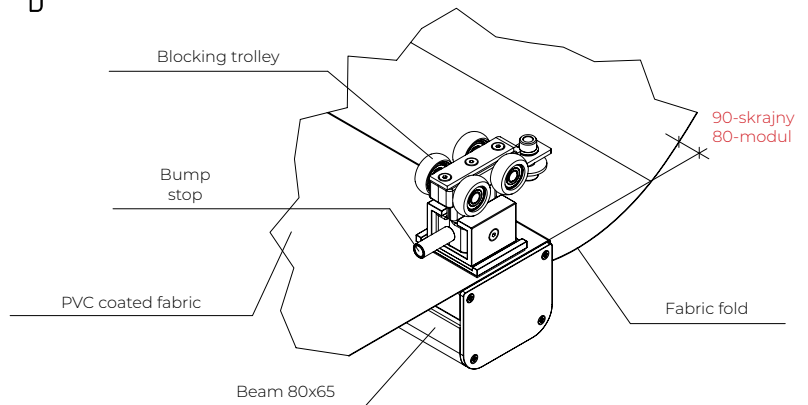
PERGOLA SOLID  
Roof cover



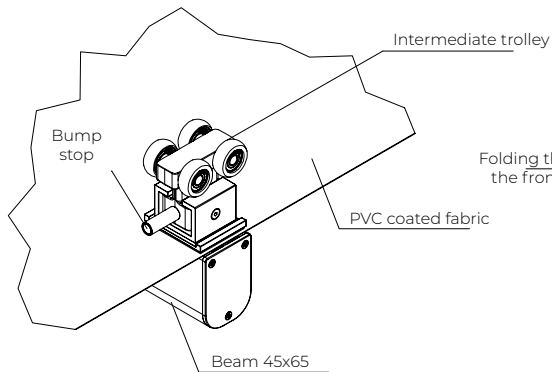
Detail A  
Fabric suspension



Detail B  
Movable blocking beam



Detail C  
Movable intermediate beam



Detail D  
Movable guiding rail

